



## Skiing the West

The thrill of downhill

**CHALLENGE THE ROCK**

*La Quinta*

Home Course of the Bob Hope Classic  
2008-2011 – A Golfer's Paradise!  
Are you up to the Challenge?  
Special Events | Weddings | Grill & Outdoor Patio

**SILVER ROCK RESORT** Call Today for Tee Times  
760.777.8884 | [www.SilverRock.org](http://www.SilverRock.org)  
MANAGED BY LANDMARK GOLF MANAGEMENT

Palm Springs Life  
**BEST OF THE BEST**

FROM PAGE 104 All courses are crafted by people moving a lot of dirt. However, some, such as Desert Dunes, have such an organic quality that they are better suited to their surroundings than others. More

### FINDING COMMUNITY

>> Lisa Reinhard can't wait to join the Coachella Valley community. Living in the Puget Sound area with her husband, Tony, Lisa is looking forward to spending more quality time in the California desert—once she gets her last child off to college, that is.

"When you are counting the months until you can be down [in La Quinta] on a more regular basis, well, that shows how enjoyable it is," Lisa says.

Like other Coachella Valley visitors beguiled by the balmy winters, the Reinhardts took the real estate plunge this year and bought a home in **Andalusia at Coral Mountain**, one of the desert's newest golf-and-lifestyle communities.

"We went around to different areas [of the Southwest]," Tony says, "[and] all the different areas on the West Coast where we could get a second home with good weather."

The Reinhardts found that the Coachella Valley won that search. Andalusia at Coral Mountain is one of more than 70 communities that are located in the Palm Springs Desert Resorts area. These communities offer plenty of variety and styles.

What attracted the Reinhardts to Andalusia was the sense of openness. They loved the great Rees Jones–designed golf course, as well as the club and its many activities. They liked the easy proximity to the growing cultural hub that is Old Town La Quinta. They also found it easy to build new social networks with the fun and friendly residents. However, what really caught their interest was the sense of being close to the amazing desert and ringed by craggy peaks.

"It's peaceful here, farther down the valley," Lisa Reinhard says. "The views are truly amazing."

The desert climate also intrigued Steve and Raenel Markstein more than a decade ago, when they headed south from Sacramento in search of a seasonal retreat.

They chose Palm Desert's **BIGHORN Golf Club**, and knew, even before moving in, that they'd done far more than invest in a

**INDIAN WELLS GOLF RESORT**  
(760) 346-4653  
[www.IndianWellsGolfResort.com](http://www.IndianWellsGolfResort.com)

than two decades of existence has allowed the course to settle in to a native landscape of sand dunes, mesquite thicket and stands of (yes, introduced) tamarisk. And while a moderate amount of development is in

nice piece of real estate with an enviable climate.

"The desert is about great communities. There's a sense of belonging," Steve says. "BIGHORN is a youthful club with a wonderful, dedicated staff. We have friends from Sacramento who are members, and we've established great relationships with people from throughout the country and even the world."

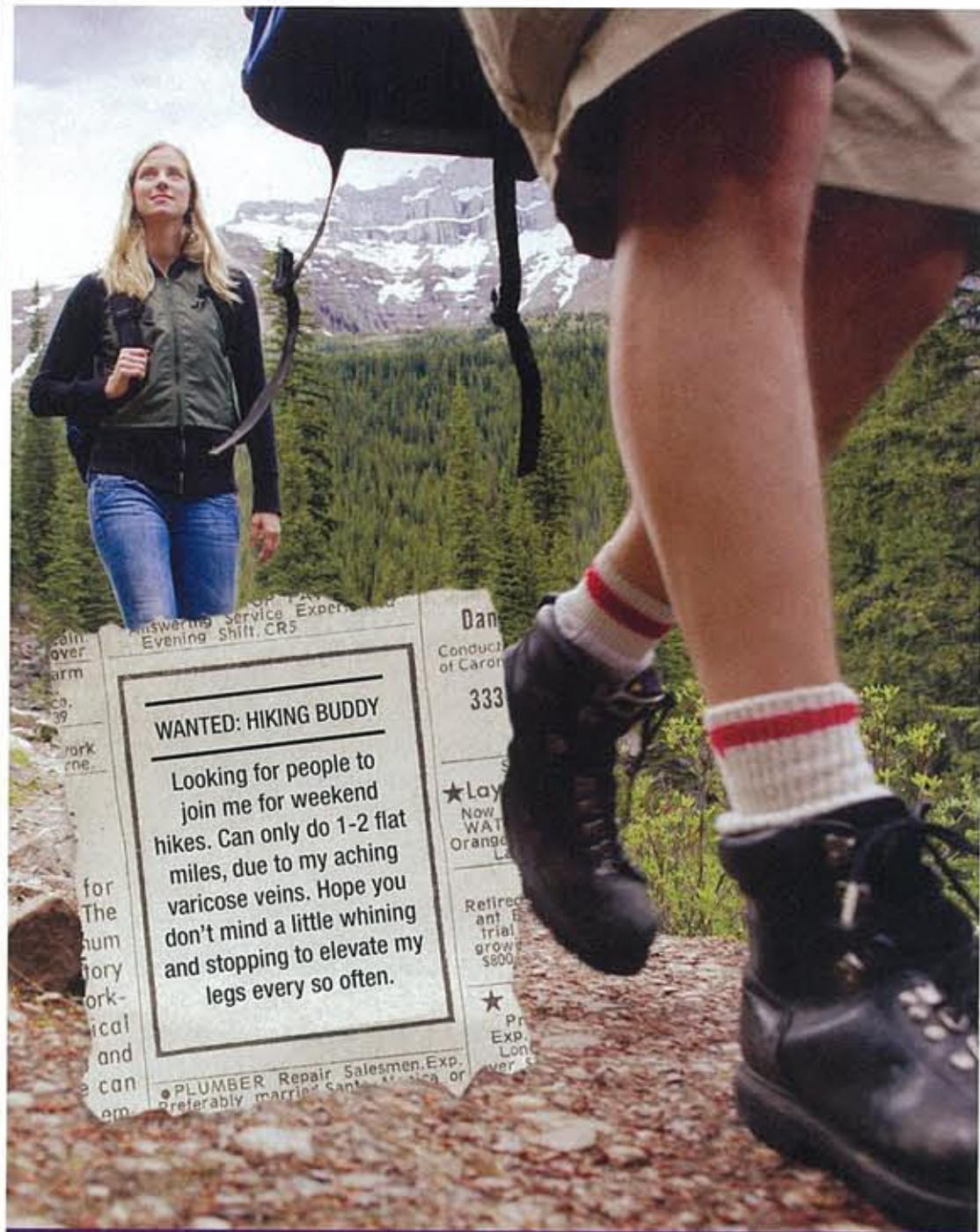
Such desert-resort friendliness is prevalent throughout the area's other communities, including **Mission Hills Country Club** in Rancho Mirage and **The Reserve** golf community at Indian Wells.

Home to the LPGA's Kraft Nabisco Championship, Mission Hills was first developed in the 1960s and enjoys a long tradition of being both an inviting community and the home of excellent golf. Desmond Muirhead completed the development's first course in 1972. Since then, both Pete Dye and Arnold Palmer have added their own Mission Hills layouts.

The Reserve golf community is another example of a fine course combined with a beautiful residential area. Built in 1999, The Reserve community and course sit at the foot of the Santa Rosa Mountains, offering residents a natural setting with wonderful views across the valley.

A beginning golfer when he moved to BIGHORN, Steve says he was instantly accepted into various playing groups. There's a friendly rivalry between the two "sides" of the community: the **Mountains Course** west of Highway 74 and the **Canyons Course** section to the east. Progressive dinners are regularly scheduled, with member-residents moving from the starter, side and main dish courses, each located at a different golf hole.

Steve is also impressed by the community service aspect of BIGHORN, where many members are involved with charitable activities. It is that sense of friendship and community that the Marksteins found on their first fall plane ride to the valley, and they've been enjoying it ever since. —K.V.V.



### Done with limitations?

Don't let your varicose veins get in the way of having the life you want. Our vascular specialists are some of the best in the field and practiced in the latest procedures. Find out how easy it can be to have the life—and the legs—you want.

Call us at 425.732.5953 or visit [www.LKWV.com](http://www.LKWV.com).

LAKE WASHINGTON  
**VASCULAR**

Total Vein Health. It's all connected.

Daniel Pepper, M.D. • Kathleen Gibson, M.D. • Brian Ferris, M.D.  
Leonard T. Su, M.D. • Renee Minjarez, M.D.